

**AN ORDINANCE OF THE SCHELL-VISTA FIRE PROTECTION DISTRICT TO DESIGNATE FIRE HAZARD SEVERITY ZONES.**

The Board of the Schell-Vista Fire Protection District ordains as follows:

The District hereby designates the Fire Hazard Severity Zones as recommended by the California Department of Forestry and Fire Protection pursuant to Government Code Section 51178.

The map approved by the District is hereby incorporated by reference and entitled "City of Sonoma-Sonoma County Local Responsibility Area Fire Hazard Severity Zones", dated February 24, 2025.

The Official map is also located electronically on the following website: [www.schellvistafire.org](http://www.schellvistafire.org).

On the motion of Director Finn, seconded by Director Kruljac.

The Roll call vote:

Director Finn Aye  
Director Stober Aye  
Director Loveless Aye

Director Kruljac Aye  
Director Neves Aye

The foregoing ordinance was passed and adopted on the 2<sup>nd</sup> day of April 2025.



Ken Finn  
President of the Board  
Schell-Vista Fire Protection District

Attest Robin Woods  
Robin Woods  
Clerk of the Board  
Schell-Vista Fire Protection District

Official Seal



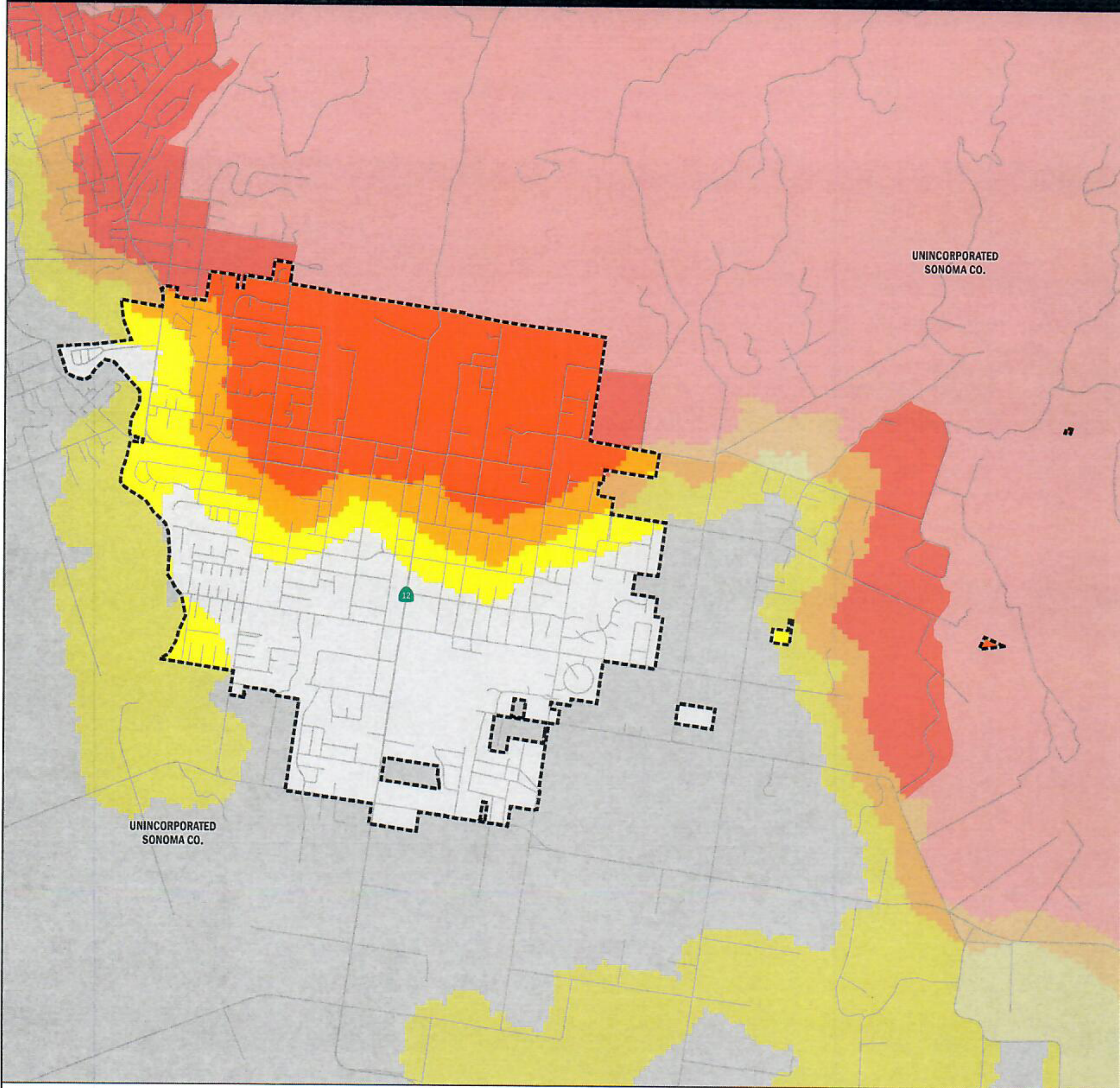




# Local Responsibility Area Fire Hazard Severity Zones

As Identified by the  
State Fire Marshal

February 24, 2025



**Fire Hazard Severity Zones (FHSZ) in Local Responsibility Area (LRA), as Identified by the State Fire Marshal**

Very High High Moderate

**Fire Hazard Severity Zones in State Responsibility Area (SRA), Effective April 1, 2024**

Very High High Moderate



Projection: NAD 83 California Teale Albers  
Scale: 1:24,000 at 11" x 17"

--- Incorporated City  
--- Unzoned LRA

Government Code section 51178 requires the State Fire Marshal to identify areas in the state as moderate, high, and very high fire hazard severity zones based on consistent

statewide criteria and based on the severity of fire hazard that is expected to prevail in those areas. Moderate, high, and very high fire hazard severity zones shall be based on fuel loading, slope, fire weather,

and other relevant factors including areas where winds have been identified by the Office of the State Fire Marshal as a major cause of wildfire spread.

The State of California and the Department of Forestry and Fire Protection make no representations or warranties regarding the accuracy of data or maps. Neither the State nor the Department shall be liable under any circumstances for any direct, special, incidental, or consequential damages with respect to any claim by any user or third party on account of, or arising from, the use of data or maps.

Gavin Newsom, Governor, State of California  
Wade Crowfoot, Secretary for Natural Resources, CA Natural Resources Agency  
Joe Tyler, Director/Fire Chief, CA Department of Forestry and Fire Protection  
Daniel Berlant, State Fire Marshal, CA Department of Forestry and Fire Protection

Data Sources:  
CAL FIRE Fire Hazard Severity Zones (FHSZSRA23\_3, FHSZLRA\_25\_1)  
CAL FIRE State Responsibility Areas (SRA25\_1)  
City and County boundaries as of 10/22/24 (CA Board of Equalization)